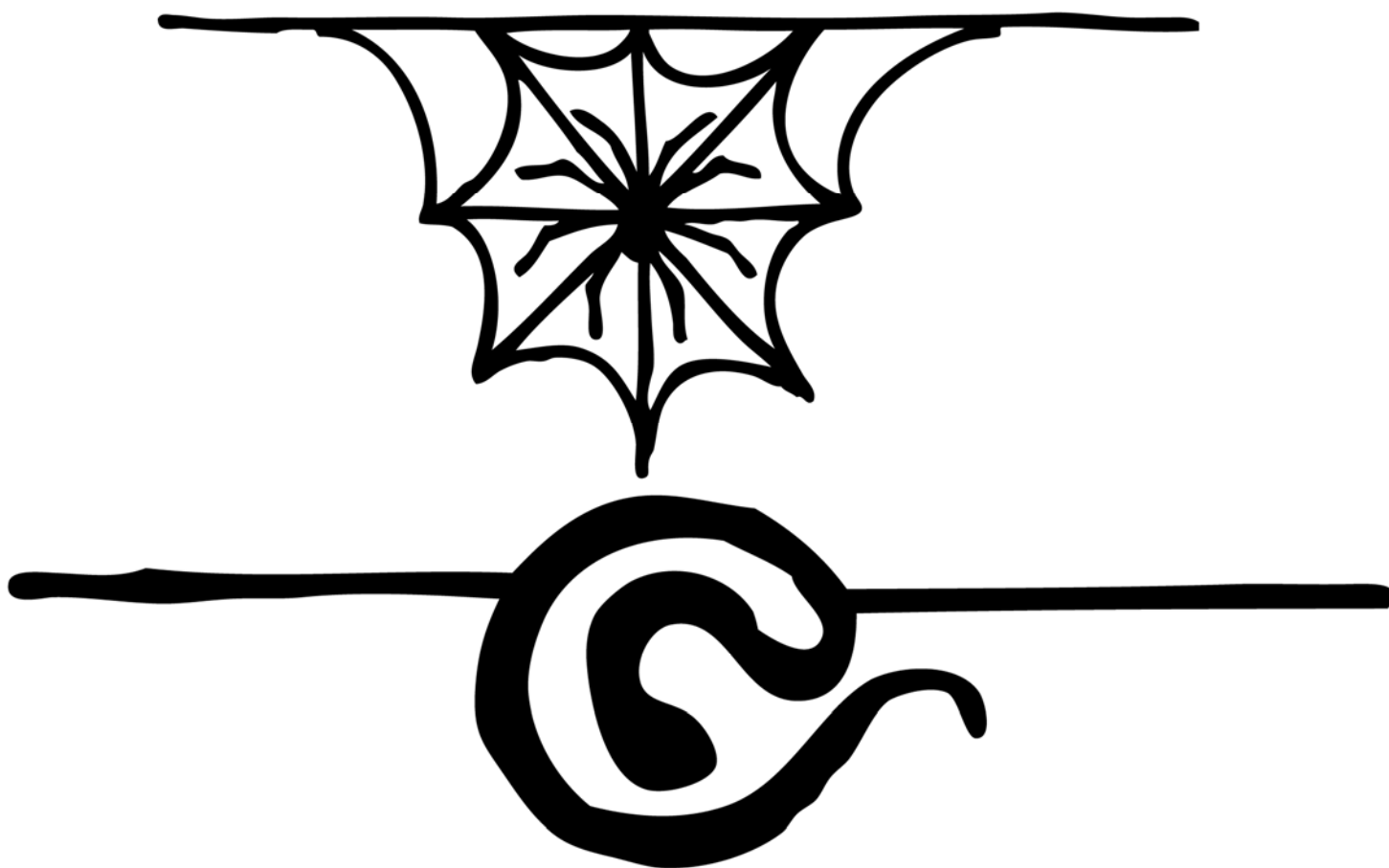
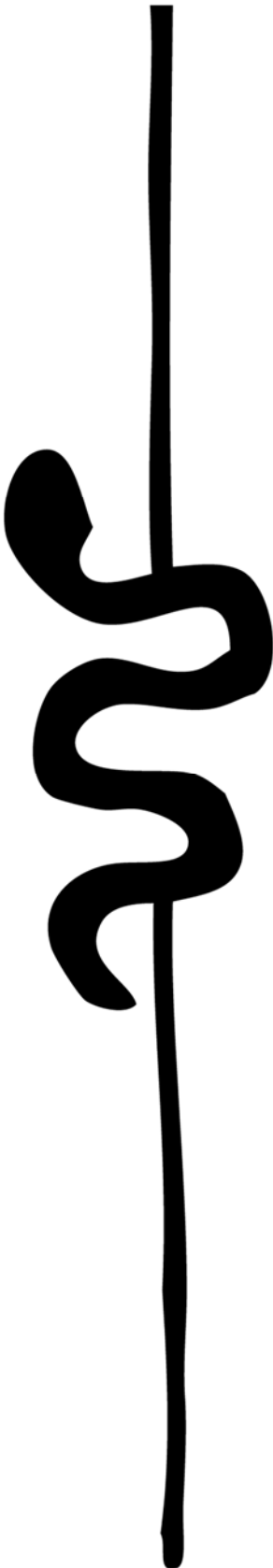
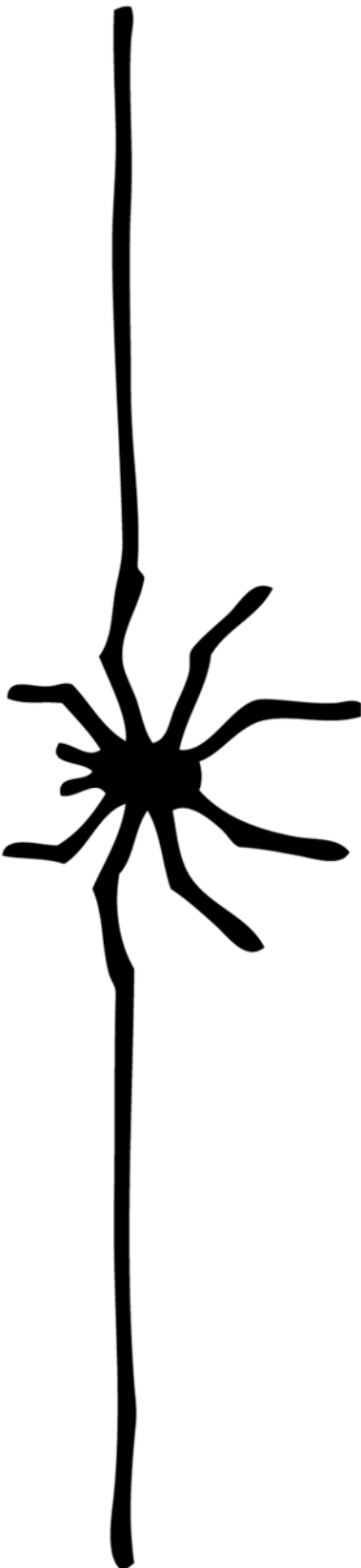


Hot Glue Gothic Jewelry Patterns

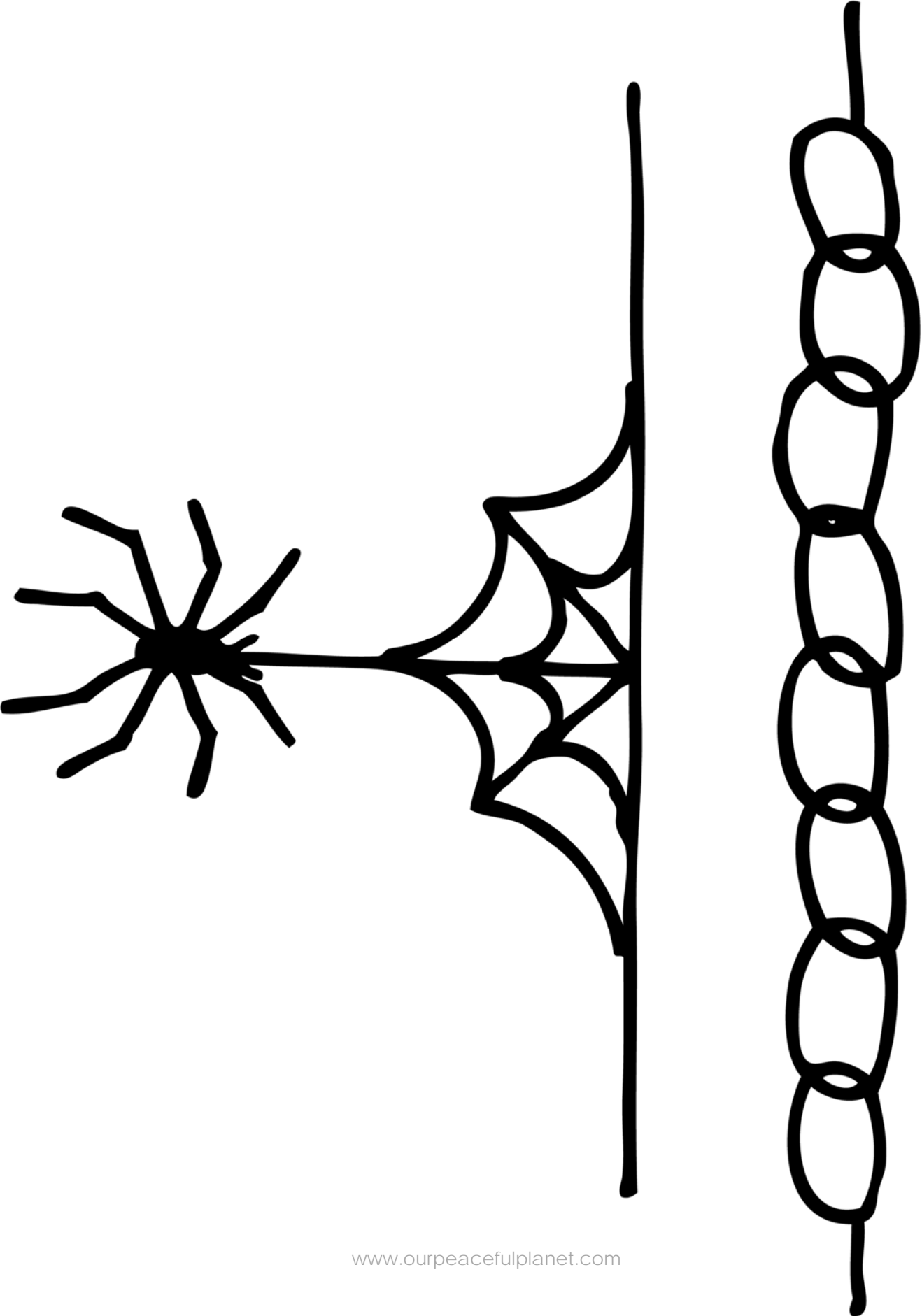
Place the pattern size of choice underneath a thin Teflon sheet. Trace with hot glue. Extend the lines as long as needed on each side. For attaching string or cord you can add balls of hot glue on the ends then flatten them out and punch a tiny hole into it to string cord. You can also use a large needle and thread it through the ends. The other simpler option is to hot glue the string or cord directly onto the line.



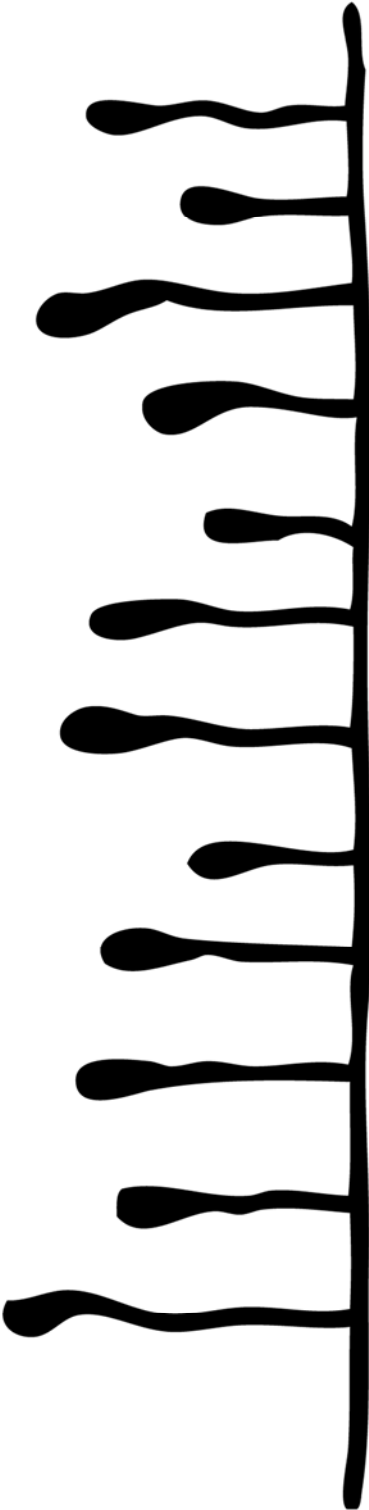
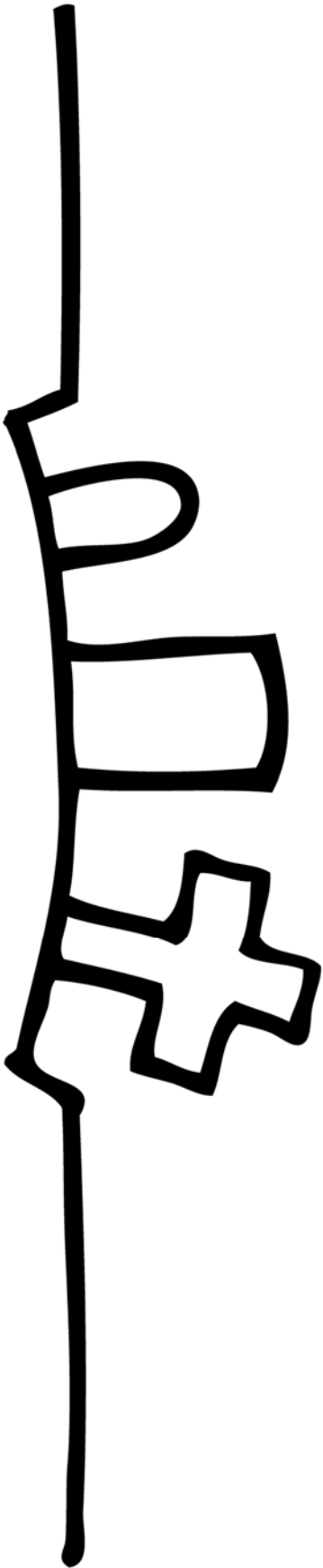
Hot Glue Gothic Jewelry Patterns



Hot Glue Gothic Jewelry Patterns

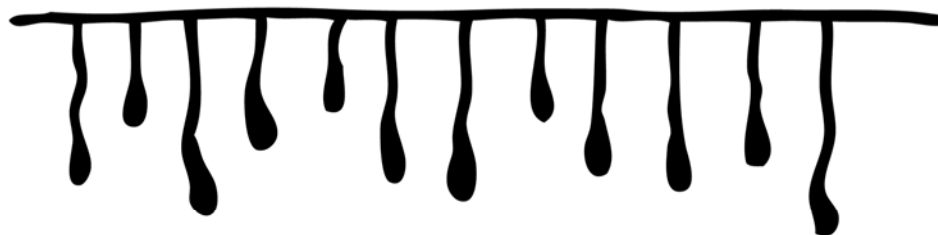
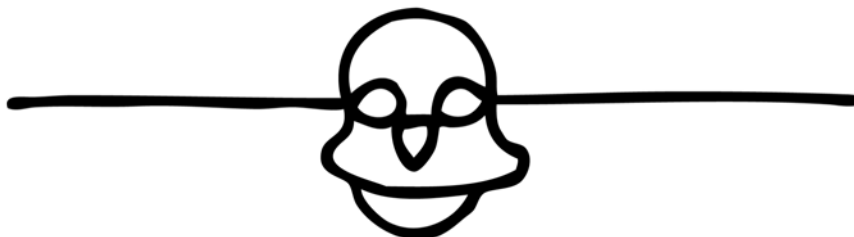
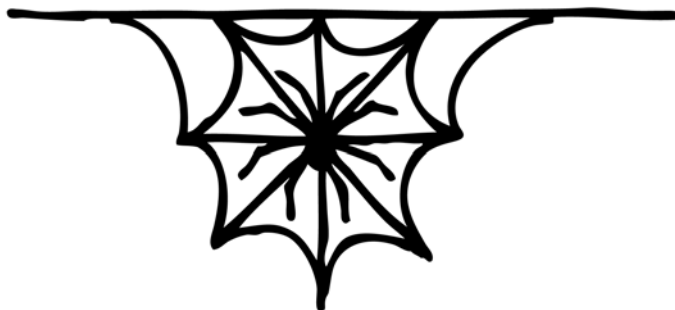


Hot Glue Gothic Jewelry Patterns



Hot Glue Gothic Jewelry Patterns

SMALLER SIZES



Hot Glue Gothic Jewelry Patterns

SMALLER SIZES

